

BEACH & PARK  
*Kestel, Alanya*

NOVIS

*Alanya - the heaven on earth where Mediterranean has been flirting with sun for hundreds of years. The extraordinary geographical and cultural texture of the region tempts thousands of people from all around the world to live in warmth here. Rich Turkish and Mediterranean cuisine combined with unique Turkish hospitality has turned this heaven into a World brand.*

*Alanya is here to upscale your lifestyle with its natural beauties, pearl-like beaches where once Cleopatra swam and its crystal clear waters.*

ALANYA





NOVIS

*Novis Beach pool view*



*Art of living joyous*

An architectural rendering of a modern, multi-story building with a white marble facade and large glass windows. The building features a balcony with a glass railing and a large window with horizontal blinds. In the foreground, there is a swimming pool with lounge chairs and umbrellas, and a grassy area with a circular daybed. The background shows a beach and the ocean under a blue sky with clouds. The text "NOVIS BEACH" is overlaid on the left side of the image.

NOVIS BEACH



*Art of living in tranquility*



CLEOPATRA  
BEACH

ALANYA

HARBOUR

RED KEEP

BEACHES

KESTEL

KESTEL  
BEACHES



NOVIS



**NOVIS BEACH™ & NOVIS PARK™** *Located in a peaceful environment only 29 km from Gazipaşa Airport and 6 km from Alanya city center right next to Mediterranean Sea.*

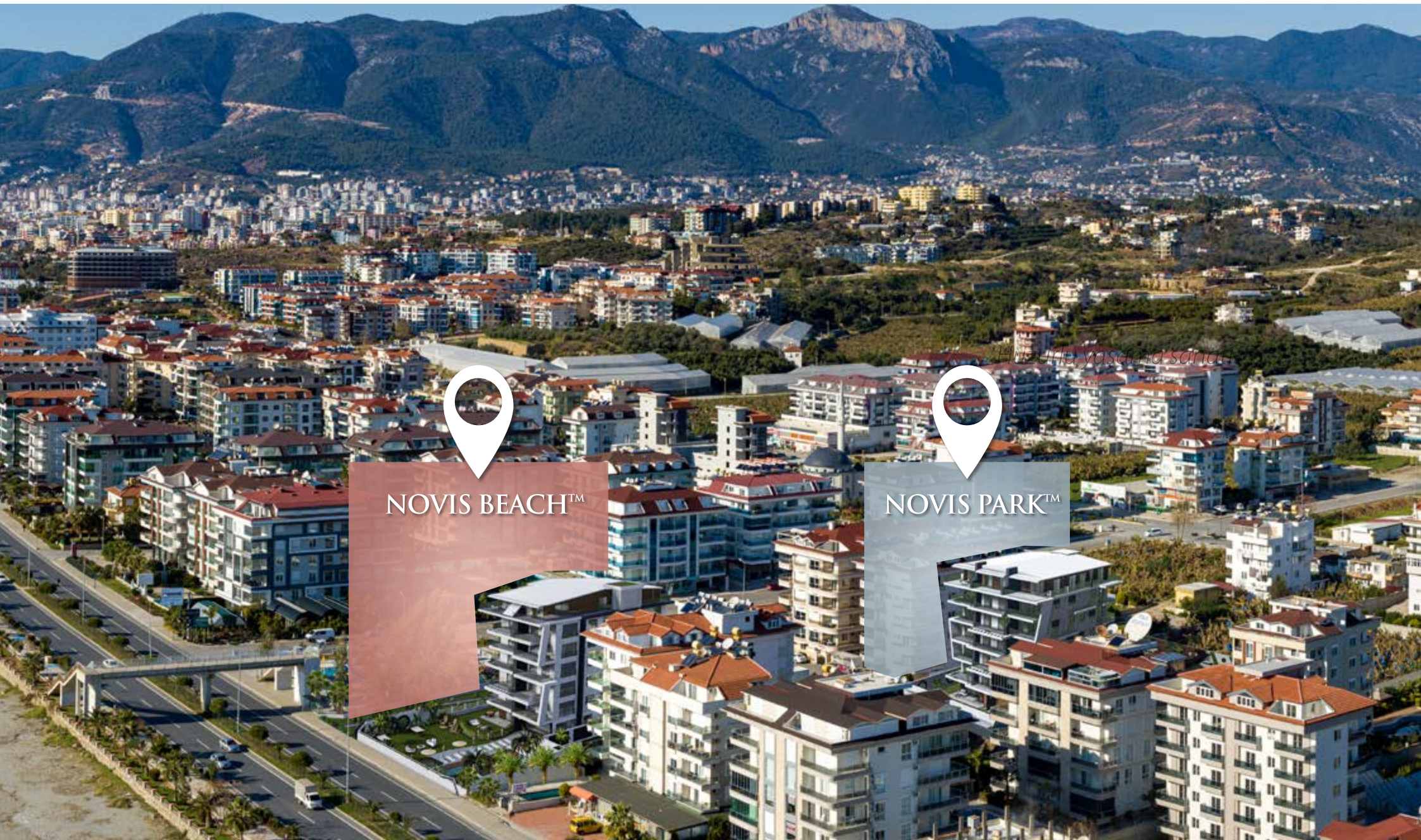
*A nest of joy only 150 meters from shopping center and 50 meters from various cafes and restaurants promising world cuisines and cosmopolitan atmosphere. You can also find large shopping centers only within a diameter of 2.5 km. The newest park of the region is located right next to the development.*

*Reaching Mediterranean Sea has never been so easy! Beach is within only a few steps walking distance with the overpass right in front of the development saving you from the concern for traffic. Layout of the region brings another important advantage; you will have no problem with parking lot or traffic congestion with abundance of large parks*

An aerial photograph of a coastal city, likely Antalya, Turkey. The image shows a long, sandy beach curving along the Mediterranean Sea. The water is a vibrant blue, transitioning from deep blue to turquoise near the shore. Waves are breaking onto the beach. In the background, a densely populated city is built on a hillside, with mountains rising behind it. The sky is clear and blue. The image is divided into three vertical panels by thin white lines. The word 'NOVIS' is overlaid in white serif font across the first two panels. The tagline 'Life opening up to Mediterranean Sea...' is overlaid in white italicized font across the second and third panels.

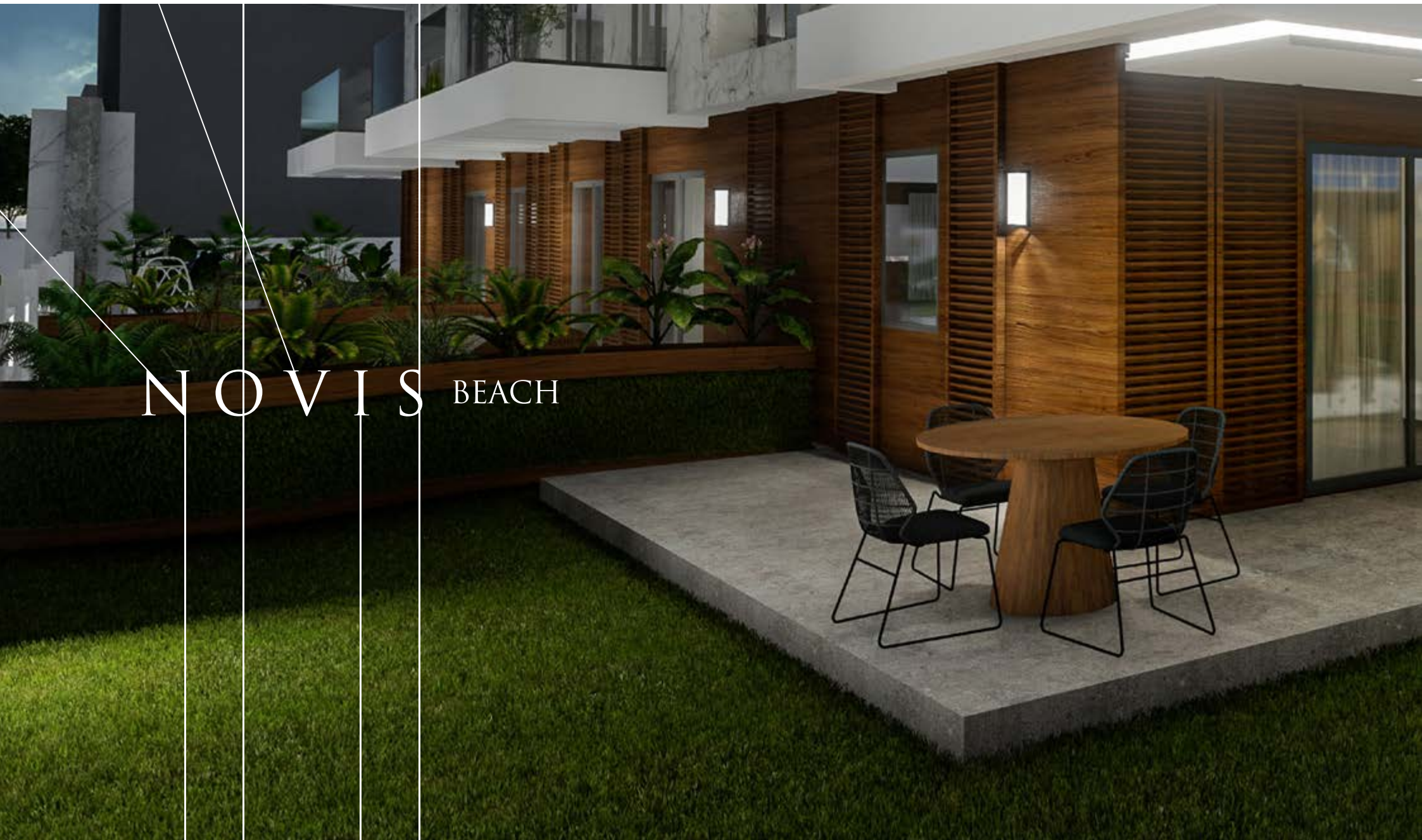
NOVIS

*Life opening up to Mediterranean Sea...*



NOVIS BEACH™

NOVIS PARK™



NOVIS BEACH



*Against the Mediterranean Sea where joy and peace meet...*





NOVIS BEACH

# NOVIS BEACH





# NOVIS PARK





NOVIS

## NOVIS BEACH™

- 3 Units, 2+1 Patio Duplex (100-130 m<sup>2</sup>)
- 3 Units, 1+1 Flats (46-50 m<sup>2</sup>)
- 4 Units, 2+1 Flats (72 m<sup>2</sup>)
- 2 Units, 2+1 Penthouse Duplex (145-160 m<sup>2</sup>)

+ All with sea view

+ Pool

+ 7/24 Security

+ Parking Lot

+ Sauna

+ Gym

+ Specially designed green areas

## NOVIS PARK™

- 2 Units, 2+1 Patio Duplex (170 m<sup>2</sup>)
- 4 Units, 1+1 Flats (50 m<sup>2</sup>)
- 6 Adet, 2+1 Flat (75 m<sup>2</sup>)
- 3 Units, 2+1 Penthouse Duplex (103-173 m<sup>2</sup>)

+ All with park & sea view

+ Pool

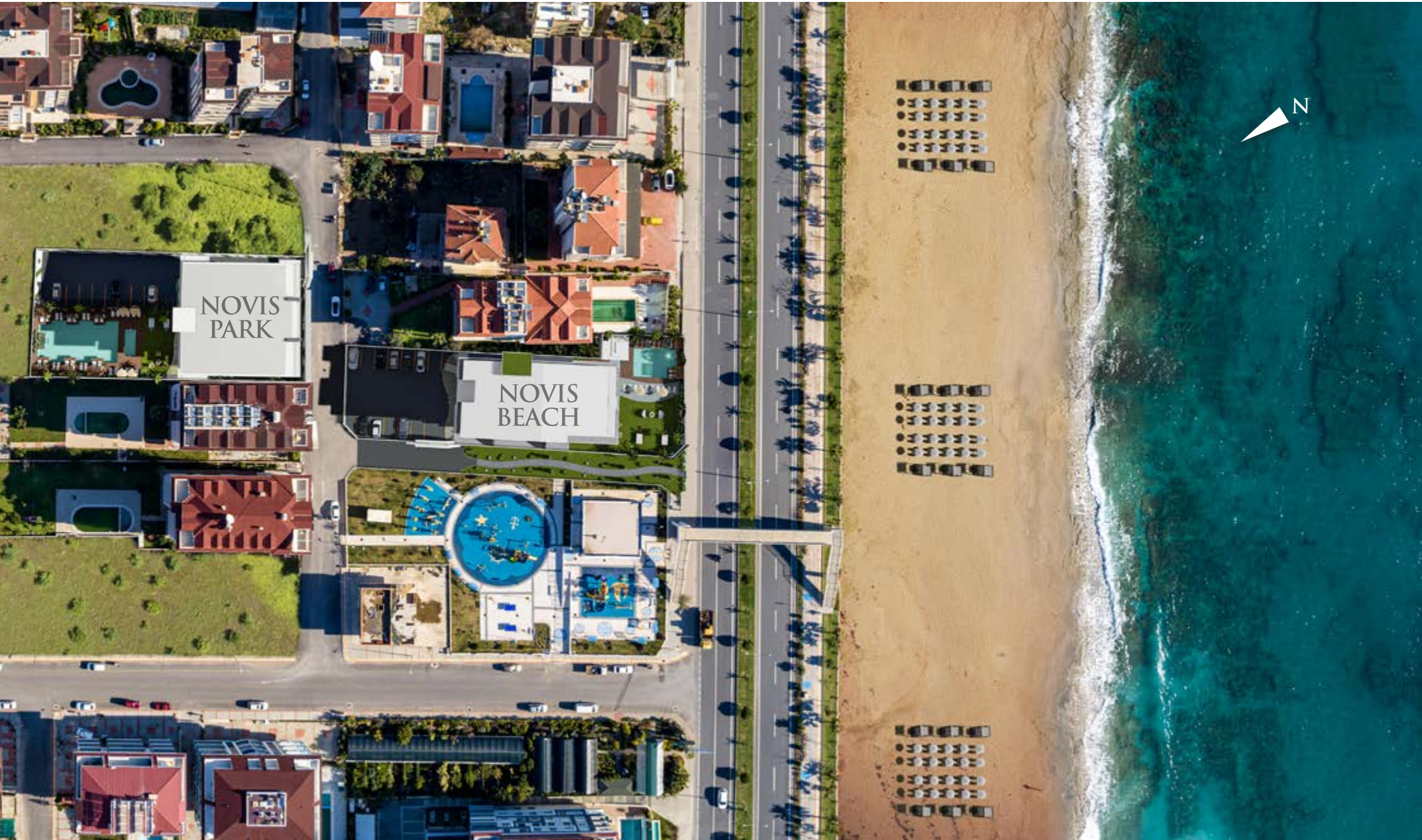
+ 7/24 Security

+ Parking Lot

+ Sauna

+ Gym

+ Specially designed green areas



NOVIS  
PARK

NOVIS  
BEACH



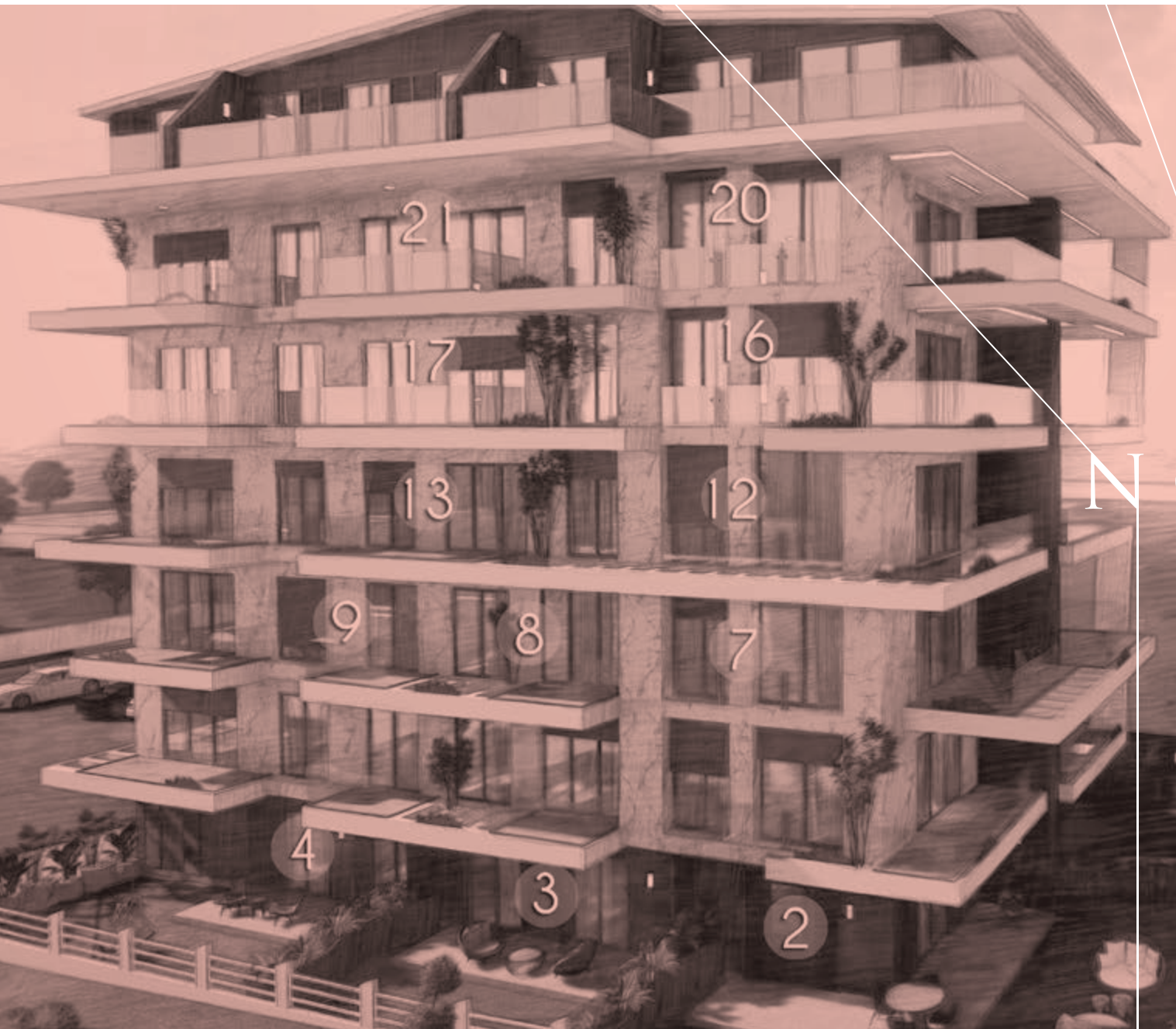


NOVIS

*Art of happy living.*

NOVIS  
BEACH

NOVIS  
PARK



NOVUS BEACH

21

20

17

16

13

12

9

8

7

4

3

2

## NOVIS BEACH™

- N°2** *Patio Duplex 2+1 ≈ 130 m<sup>2</sup>*
- N°3** *Patio Duplex 2+1 ≈ 100 m<sup>2</sup>*
- N°4** *Patio Duplex 2+1 ≈ 100 m<sup>2</sup>*
- N°7** *Flat 1+1 ≈ 50 m<sup>2</sup>*
- N°8** *Flat 1+1 ≈ 46 m<sup>2</sup>*
- N°9** *Flat 1+1 ≈ 46 m<sup>2</sup>*
- N°12** *Flat 2+1 ≈ 70 m<sup>2</sup>*
- N°13** *Flat 2+1 ≈ 72 m<sup>2</sup>*
- N°16** *Flat 2+1 ≈ 70 m<sup>2</sup>*
- N°17** *Flat 2+1 ≈ 72 m<sup>2</sup>*
- N°20** *Penthouse Duplex 2+1 ≈ 160 m<sup>2</sup>*
- N°21** *Penthouse Duplex 2+1 ≈ 145 m<sup>2</sup>*





NOVIS BEACH



# NOVIS BEACH™ N°2

Patio Duplex 2+1 ≈ 130 m<sup>2</sup>

## Ground Floor

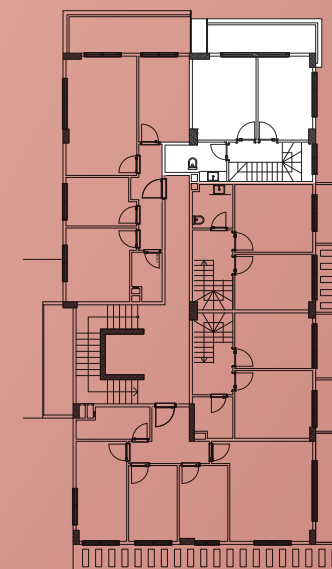
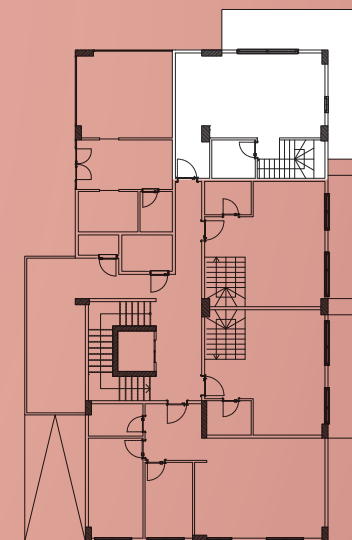
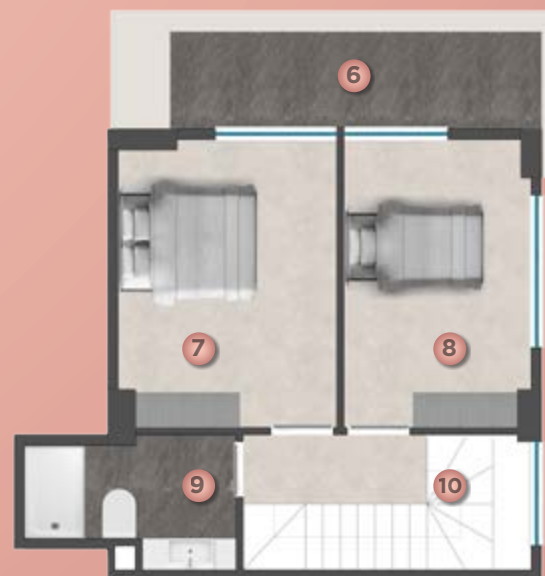
- 1 Balcony ≈ 26 m<sup>2</sup>
- 2 Kitchen & Living Room ≈ 31 m<sup>2</sup>
- 3 Doorway ≈ 3,5 m<sup>2</sup>
- 4 Bathroom ≈ 4 m<sup>2</sup>
- 5 Corridor & Stairs ≈ 8,5 m<sup>2</sup>

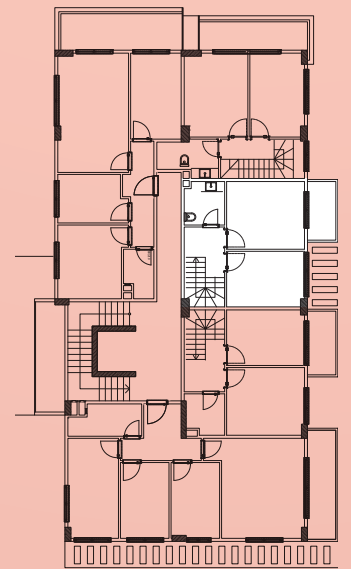
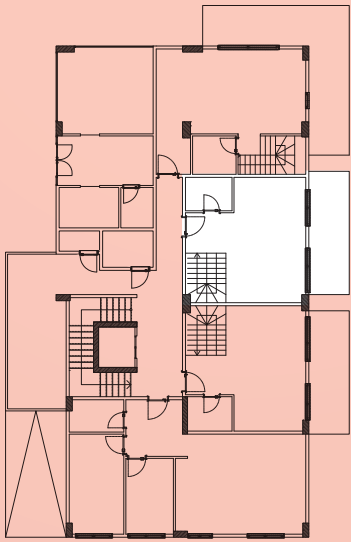
## Upper Floor

- 6 Balcony ≈ 8,5 m<sup>2</sup>
- 7 Bedroom ≈ 13 m<sup>2</sup>
- 8 Bedroom ≈ 11,5 m<sup>2</sup>
- 9 Bathroom ≈ 4,5 m<sup>2</sup>
- 10 Corridor & Stairs ≈ 8,5 m<sup>2</sup>

Net Total 119 m<sup>2</sup>

**Gross Total 130 m<sup>2</sup>**





## NOVIS BEACH™ N°3

Patio Duplex 2+1 100 m<sup>2</sup>

### Ground Floor

- 1 Balcony ≈ 13 m<sup>2</sup>
- 2 Kitchen & Living Room ≈ 28 m<sup>2</sup>
- 3 Bathroom ≈ 4 m<sup>2</sup>
- 4 Corridor & Stairs ≈ 5 m<sup>2</sup>

### Upper Floor

- 5 Balcony ≈ 5 m<sup>2</sup>
- 6 Bedroom ≈ 13 m<sup>2</sup>
- 7 Bedroom ≈ 11 m<sup>2</sup>
- 8 Bathroom ≈ 4,5 m<sup>2</sup>
- 9 Corridor & Stairs ≈ 8,5 m<sup>2</sup>

Net Total 92 m<sup>2</sup>

**Gross Total 100 m<sup>2</sup>**

# NOVIS BEACH™ N°4

Patio Duplex 2+1 100 m<sup>2</sup>

## Ground Floor

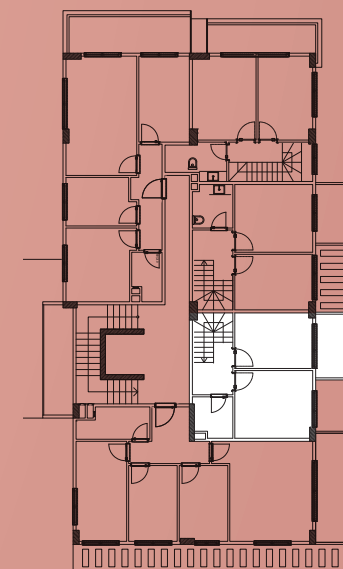
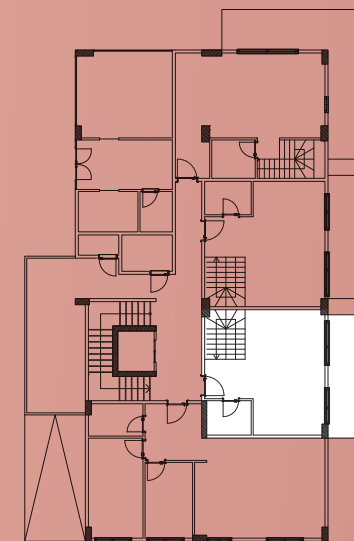
- 1 Balcony ≈ 13 m<sup>2</sup>
- 2 Kitchen & Living Room ≈ 28 m<sup>2</sup>
- 3 Bathroom ≈ 4 m<sup>2</sup>
- 4 Corridor & Stairs ≈ 5 m<sup>2</sup>

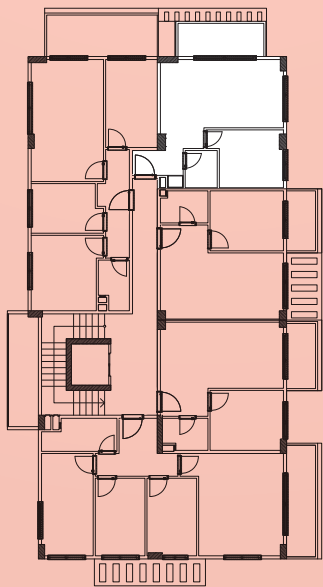
## Upper Floor

- 5 Balcony ≈ 5 m<sup>2</sup>
- 6 Bedroom ≈ 11 m<sup>2</sup>
- 7 Bedroom ≈ 13 m<sup>2</sup>
- 8 Bathroom ≈ 4,5 m<sup>2</sup>
- 9 Corridor & Stairs ≈ 8,5 m<sup>2</sup>

Net Total 92 m<sup>2</sup>

**Gross Total 100 m<sup>2</sup>**





## NOVIS BEACH™ N°7

Flat 1+1 50 m<sup>2</sup>

- 1 Balcony  $\approx 8 \text{ m}^2$
- 2 Kitchen & Living Room  $\approx 22 \text{ m}^2$
- 3 Bathroom  $\approx 3.5 \text{ m}^2$
- 4 Doorway  $\approx 2 \text{ m}^2$
- 5 Bedroom  $\approx 10.5 \text{ m}^2$

Net Total 46 m<sup>2</sup>

**Gross Total 50 m<sup>2</sup>**



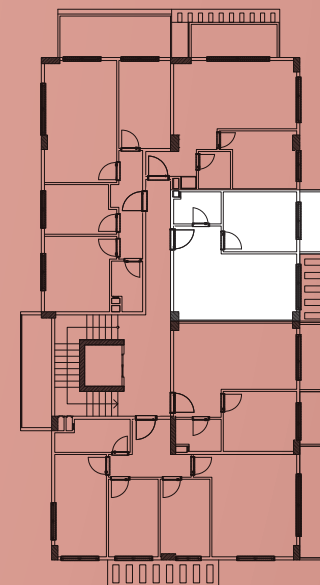
## NOVIS BEACH™ N°8

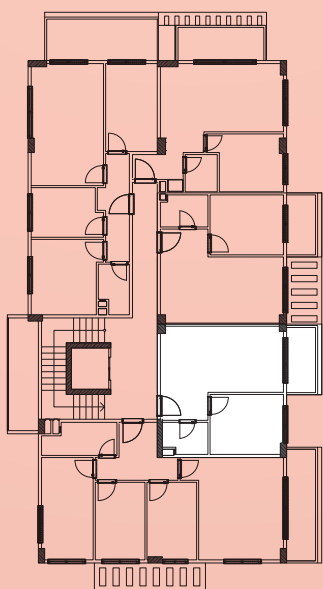
Flat 1+1 46 m<sup>2</sup>

- 1 Balcony ≈ 6 m<sup>2</sup>
- 2 Kitchen & Living Room ≈ 23 m<sup>2</sup>
- 3 Bathroom ≈ 3.5 m<sup>2</sup>
- 4 Bedroom ≈ 10.5 m<sup>2</sup>

Net Total 43 m<sup>2</sup>

**Gross Total 46 m<sup>2</sup>**





## NOVIS BEACH™ N°9

Flat 1+1 46 m<sup>2</sup>

- 1 Balcony  $\approx 6 \text{ m}^2$
- 2 Kitchen & Living Room  $\approx 23 \text{ m}^2$
- 3 Bathroom  $\approx 3.5 \text{ m}^2$
- 4 Bedroom  $\approx 10.5 \text{ m}^2$

Net Total 43 m<sup>2</sup>

**Gross Total 46 m<sup>2</sup>**



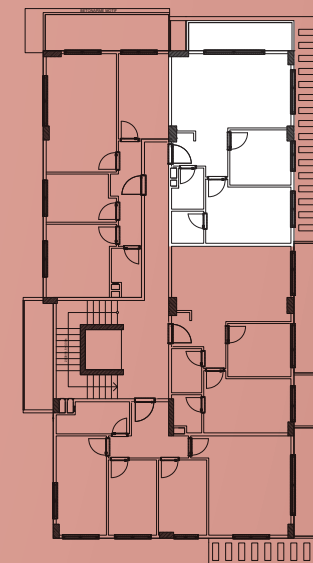
## NOVIS BEACH™ N°12

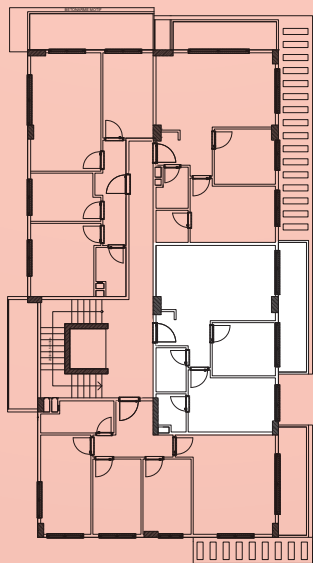
Flat 2+1 70 m<sup>2</sup>

- |   |                       |                       |
|---|-----------------------|-----------------------|
| 1 | Balcony               | ≈ 8,5 m <sup>2</sup>  |
| 2 | Kitchen & Living Room | ≈ 23 m <sup>2</sup>   |
| 3 | Bedroom               | ≈ 8,5 m <sup>2</sup>  |
| 4 | Bedroom               | ≈ 12,5 m <sup>2</sup> |
| 5 | Bathroom              | ≈ 3,2 m <sup>2</sup>  |
| 6 | Bathroom              | ≈ 2,7 m <sup>2</sup>  |
| 7 | Doorway               | ≈ 4,5 m <sup>2</sup>  |

Net Total 63 m<sup>2</sup>

**Gross Total 70 m<sup>2</sup>**





## NOVIS BEACH™ N°13

Flat 2+1 72 m<sup>2</sup>

- |   |                       |                       |
|---|-----------------------|-----------------------|
| 1 | Balcony               | ≈ 10 m <sup>2</sup>   |
| 2 | Kitchen & Living Room | ≈ 23 m <sup>2</sup>   |
| 3 | Bedroom               | ≈ 8,5 m <sup>2</sup>  |
| 4 | Bedroom               | ≈ 12,5 m <sup>2</sup> |
| 5 | Bathroom              | ≈ 3,2 m <sup>2</sup>  |
| 6 | Bathroom              | ≈ 2,7 m <sup>2</sup>  |
| 7 | Doorway               | ≈ 4,5 m <sup>2</sup>  |

Net Total 64.5 m<sup>2</sup>

**Gross Total 72 m<sup>2</sup>**





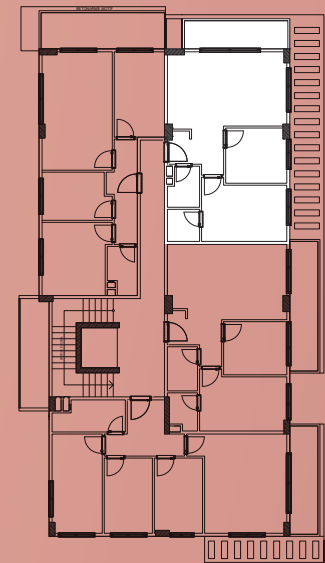
## NOVIS BEACH™ N°16

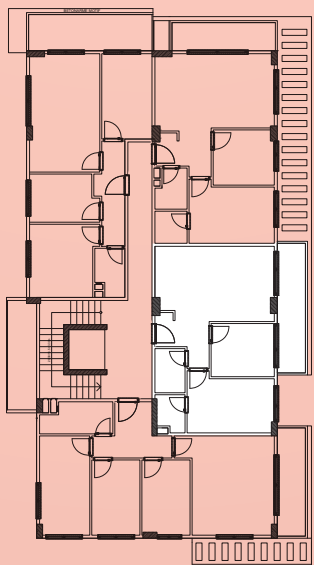
Flat 2+1 70 m<sup>2</sup>

- |          |                       |                       |
|----------|-----------------------|-----------------------|
| <b>1</b> | Balcony               | ≈ 8,5 m <sup>2</sup>  |
| <b>2</b> | Kitchen & Living Room | ≈ 23 m <sup>2</sup>   |
| <b>3</b> | Bedroom               | ≈ 8,5 m <sup>2</sup>  |
| <b>4</b> | Bedroom               | ≈ 12,5 m <sup>2</sup> |
| <b>5</b> | Bathroom              | ≈ 3,2 m <sup>2</sup>  |
| <b>6</b> | Bathroom              | ≈ 2,7 m <sup>2</sup>  |
| <b>7</b> | Doorway               | ≈ 4,5 m <sup>2</sup>  |

Net Total 63 m<sup>2</sup>

**Gross Total 70 m<sup>2</sup>**





## NOVIS BEACH™ N°17

Flat 2+1 72 m<sup>2</sup>

- 1 Balcony ≈ 10 m<sup>2</sup>
- 2 Kitchen & Living Room ≈ 23 m<sup>2</sup>
- 3 Bedroom ≈ 8,5 m<sup>2</sup>
- 4 Bedroom ≈ 12,5 m<sup>2</sup>
- 5 Bathroom ≈ 3,2 m<sup>2</sup>
- 6 Bathroom ≈ 2,7 m<sup>2</sup>
- 7 Doorway ≈ 4,5 m<sup>2</sup>

Net Total 64,5 m<sup>2</sup>

**Gross Total 72 m<sup>2</sup>**



# NOVIS BEACH™ N°20

Penthouse Duplex 2+1 ≈ 160 m<sup>2</sup>

## Ground Floor

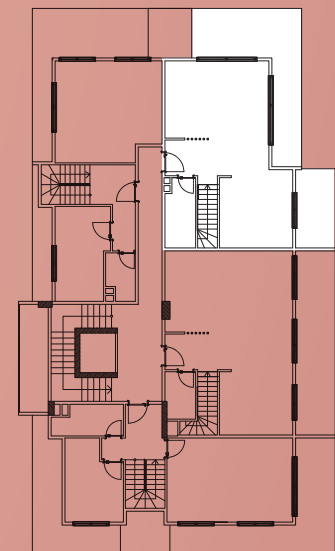
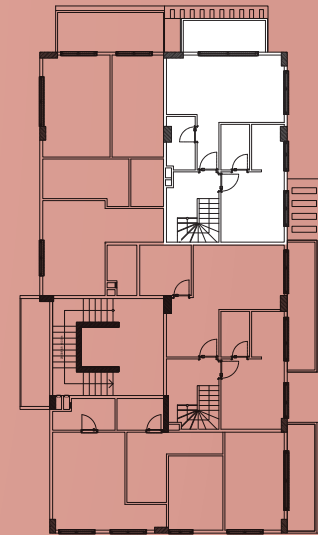
- 1 Balcony ≈ 10 m<sup>2</sup>
- 2 Bedroom ≈ 20,5 m<sup>2</sup>
- 3 Bedroom ≈ 15,5 m<sup>2</sup>
- 4 Bathroom ≈ 3,5 m<sup>2</sup>
- 5 Bathroom ≈ 3,5 m<sup>2</sup>
- 6 Corridor & Stairs ≈ 9,5 m<sup>2</sup>

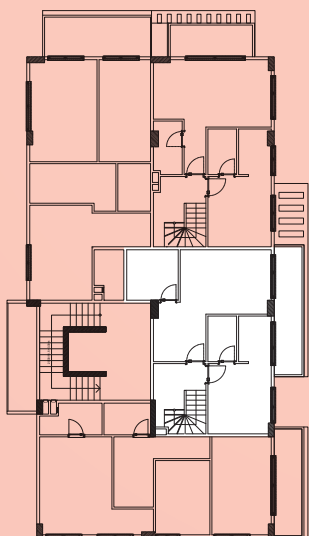
## Upper Floor

- 7 Doorway ≈ 5 m<sup>2</sup>
- 8 Living Room ≈ 24 m<sup>2</sup>
- 9 Kitchen ≈ 15 m<sup>2</sup>
- 10 Bathroom ≈ 5 m<sup>2</sup>
- 11 Terrace ≈ 22,5 m<sup>2</sup>
- 12 Terrace ≈ 7 m<sup>2</sup>

Net Total 141 m<sup>2</sup>

**Gross Total 160 m<sup>2</sup>**



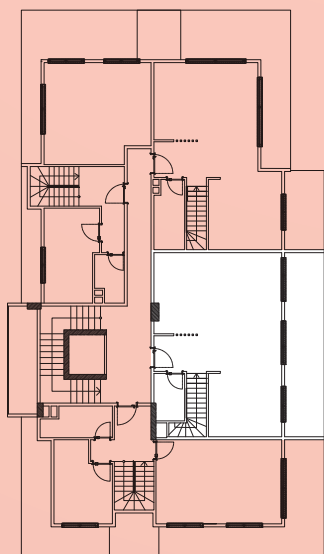


## NOVIS BEACH™ N°21

Penthouse Duplex 2+1  $\approx 145 \text{ m}^2$

### Ground Floor

- 1 Balcony  $\approx 10 \text{ m}^2$
- 2 Bedroom  $\approx 21,5 \text{ m}^2$
- 3 Bedroom  $\approx 15,5 \text{ m}^2$
- 4 Bathroom  $\approx 6,5 \text{ m}^2$
- 5 Bathroom  $\approx 3,5 \text{ m}^2$
- 6 Corridor & Stairs  $\approx 9,5 \text{ m}^2$



### Upper Floor

- 7 Doorway  $\approx 5 \text{ m}^2$
- 8 Living Room  $\approx 24 \text{ m}^2$
- 9 Kitchen  $\approx 15 \text{ m}^2$
- 10 Bathroom  $\approx 3,5 \text{ m}^2$
- 11 Terrace  $\approx 18,5 \text{ m}^2$

Net Total  $132,5 \text{ m}^2$

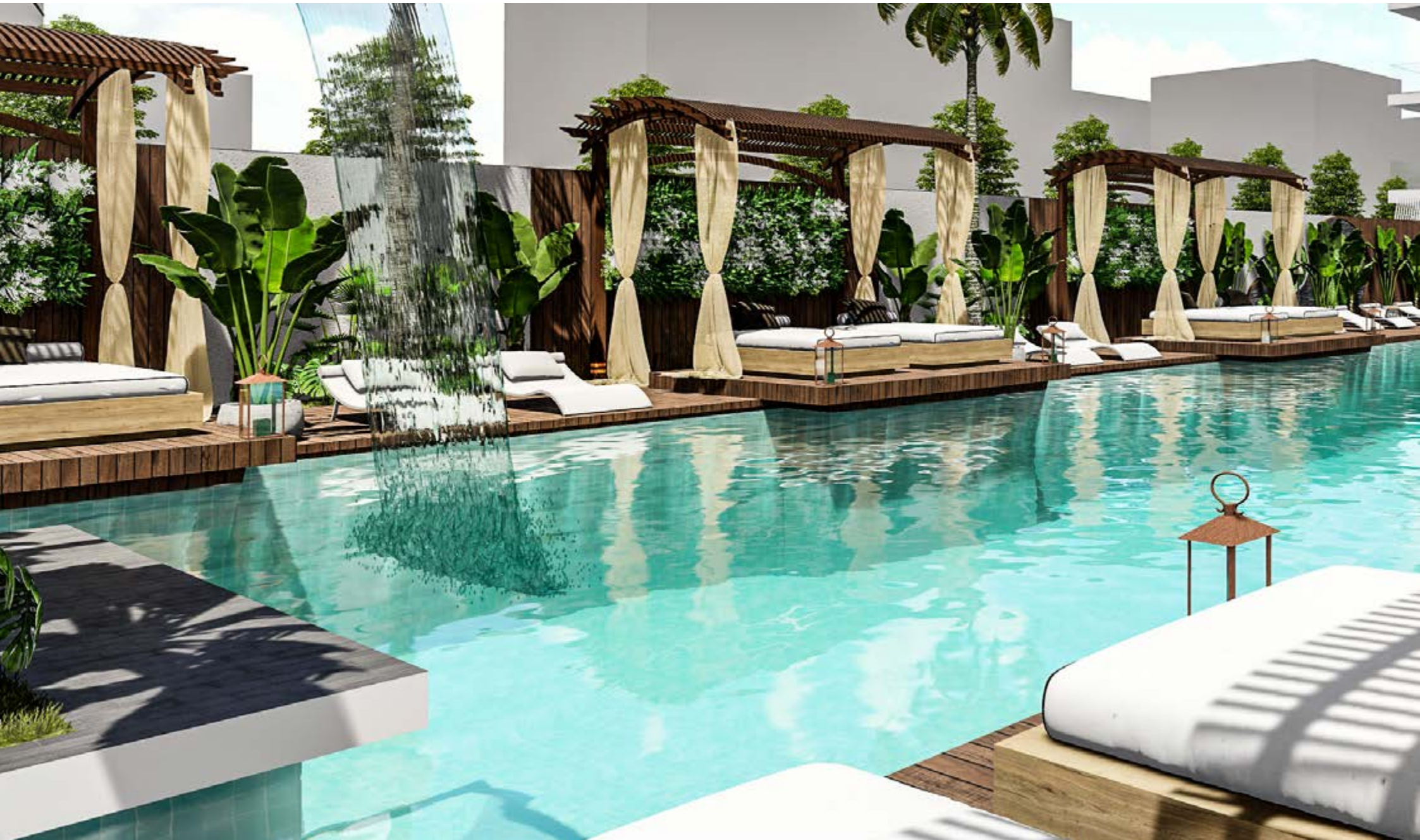
**Gross Total  $145 \text{ m}^2$**





NOVIS PARK™

NOVIS BEACH™





NOVIS PARK



NOVIS PARK







24

23

22

19

18

17

14

13

12

9

8

7

3

4

2

# NOVIS PARK

## NOVIS PARK™

- N°2** *Patio Duplex 2+1 ≈ 168m<sup>2</sup>*
- N°3** *Flat 1+1 ≈ 50 m<sup>2</sup>*
- N°4** *Patio Duplex 2+1 ≈ 170 m<sup>2</sup>*
- N°7** *Flat 2+1 ≈ 75m<sup>2</sup>*
- N°8** *Flat 1+1 ≈ 50 m<sup>2</sup>*
- N°9** *Flat 2+1 ≈ 75 m<sup>2</sup>*
- N°12** *Flat 2+1 ≈ 75 m<sup>2</sup>*
- N°13** *Flat 1+1 ≈ 50 m<sup>2</sup>*
- N°14** *Flat 2+1 ≈ 75 m<sup>2</sup>*
- N°17** *Flat 2+1 ≈ 75 m<sup>2</sup>*
- N°18** *Flat 1+1 ≈ 50m<sup>2</sup>*
- N°19** *Flat 2+1 ≈ 75 m<sup>2</sup>*
- N°22** *Penthouse Duplex 2+1 ≈ 173 m<sup>2</sup>*
- N°23** *Penthouse Duplex 2+1 ≈ 108 m<sup>2</sup>*
- N°24** *Penthouse Duplex 2+1 ≈ 173 m<sup>2</sup>*





NOVIS PARK

# NOVIS PARK™ N°2

Patio Duplex 2+1 168 m<sup>2</sup>

## Ground Floor

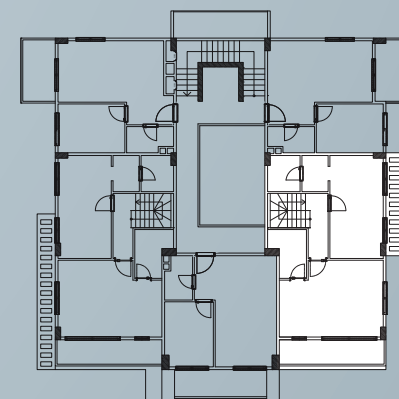
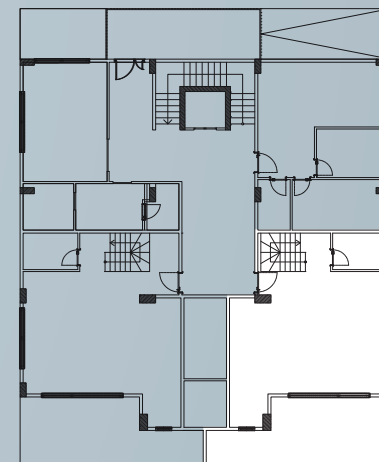
- 1 Balcony ≈ 25 m<sup>2</sup>
- 2 Kitchen & Living Room ≈ 48 m<sup>2</sup>
- 3 Bathroom ≈ 5 m<sup>2</sup>
- 4 Corridor & Stairs ≈ 10 m<sup>2</sup>

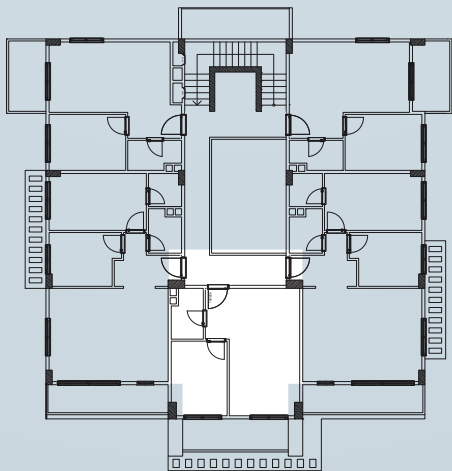
## Upper Floor

- 5 Balcony ≈ 8,5 m<sup>2</sup>
- 6 Master Bedroom ≈ 23 m<sup>2</sup>
- 7 Bedroom ≈ 17 m<sup>2</sup>
- 8 Dressing Room ≈ 3 m<sup>2</sup>
- 9 Bathroom ≈ 3,5 m<sup>2</sup>
- 10 Bathroom ≈ 4,5 m<sup>2</sup>
- 11 Corridor & Stairs ≈ 8,5 m<sup>2</sup>

Net Total 156 m<sup>2</sup>

**Gross Total 168 m<sup>2</sup>**





## NOVIS PARK™ N°3

Flat 1+1 50 m<sup>2</sup>

- 1 Balcony ≈ 8,5 m<sup>2</sup>
- 2 Kitchen & Living Room ≈ 23,5 m<sup>2</sup>
- 3 Bedroom ≈ 10,5 m<sup>2</sup>
- 4 Bathroom ≈ 3,5 m<sup>2</sup>

Net Total 46 m<sup>2</sup>

**Gross Total 50 m<sup>2</sup>**



# NOVIS PARK™ N°4

Patio Duplex 2+1 170 m<sup>2</sup>

## Ground Floor

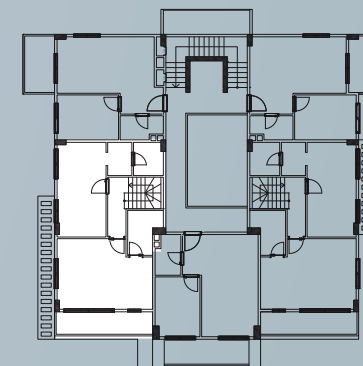
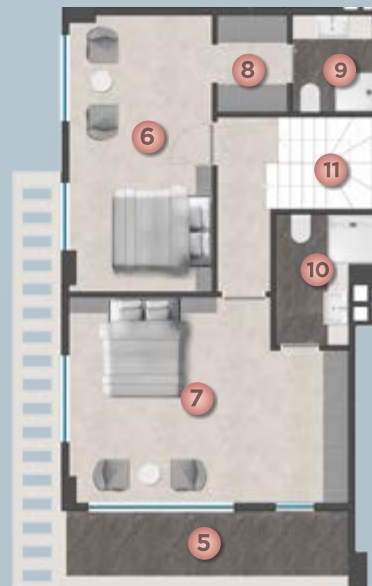
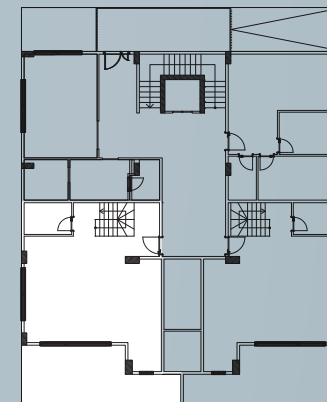
- 1 Balcony ≈ 25 m<sup>2</sup>
- 2 Kitchen & Living Room ≈ 48 m<sup>2</sup>
- 3 Bathroom ≈ 5 m<sup>2</sup>
- 4 Corridor & Stairs ≈ 14 m<sup>2</sup>

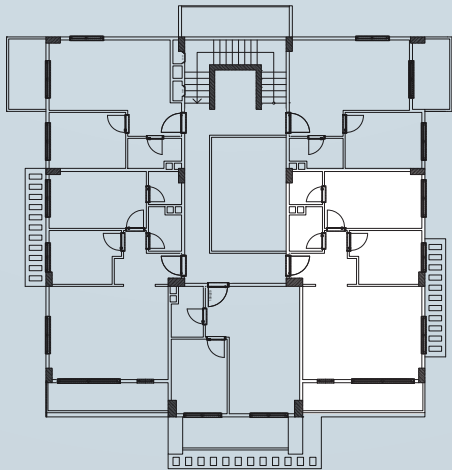
## Upper Floor

- 5 Balcony ≈ 8,5 m<sup>2</sup>
- 6 Bedroom ≈ 17 m<sup>2</sup>
- 7 Bedroom ≈ 23 m<sup>2</sup>
- 8 Dressing Room ≈ 3 m<sup>2</sup>
- 9 Bathroom ≈ 3,5 m<sup>2</sup>
- 10 Bathroom ≈ 4,5 m<sup>2</sup>
- 11 Corridor & Stairs ≈ 8,5 m<sup>2</sup>

Net Total 160 m<sup>2</sup>

**Gross Total 170 m<sup>2</sup>**





## NOVIS PARK™ N°7

Flat 2+1 75 m<sup>2</sup>

- 1 Balcony ≈ 8,5 m<sup>2</sup>
- 2 Kitchen & Living Room ≈ 26 m<sup>2</sup>
- 3 Doorway ≈ 5 m<sup>2</sup>
- 4 Bedroom ≈ 9 m<sup>2</sup>
- 5 Bedroom ≈ 13,5 m<sup>2</sup>
- 6 Bathroom ≈ 2,5 m<sup>2</sup>
- 7 Bathroom ≈ 3 m<sup>2</sup>

Net Total 67,5 m<sup>2</sup>

**Gross Total 75 m<sup>2</sup>**





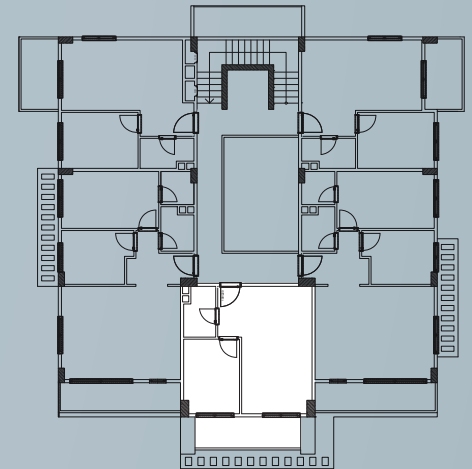
## NOVIS PARK™ N°8

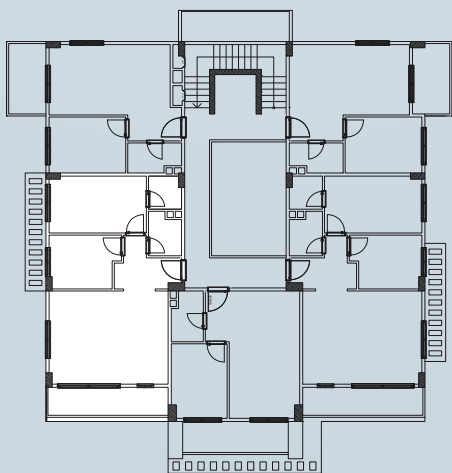
Flat 1+1 50 m<sup>2</sup>

- 1 Balcony  $\approx 13$  m<sup>2</sup>
- 2 Kitchen & Living Room  $\approx 28$  m<sup>2</sup>
- 3 Bathroom  $\approx 4$  m<sup>2</sup>
- 5 Bedroom  $\approx 10,5$  m<sup>2</sup>

Net Total 46 m<sup>2</sup>

**Gross Total 50 m<sup>2</sup>**





## NOVIS PARK™ N°9

Flat 2+1 75 m<sup>2</sup>

- 1 Balcony ≈ 8,5 m<sup>2</sup>
- 2 Kitchen & Living Room ≈ 26 m<sup>2</sup>
- 3 Doorway ≈ 5 m<sup>2</sup>
- 4 Bedroom ≈ 9 m<sup>2</sup>
- 5 Bedroom ≈ 13,5 m<sup>2</sup>
- 6 Bathroom ≈ 9 m<sup>2</sup>
- 7 Bathroom ≈ 13,5 m<sup>2</sup>

Net Total 67,5 m<sup>2</sup>

**Gross Total 75 m<sup>2</sup>**



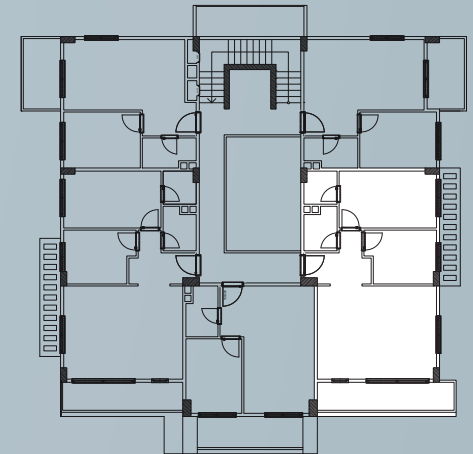
## NOVIS PARK™ N°12

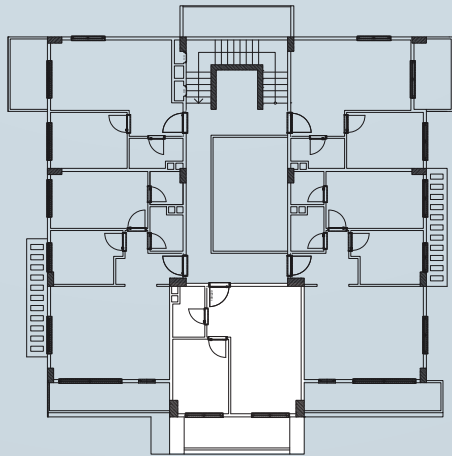
Flat 2+1 70 m<sup>2</sup>

- 1 Balcony ≈ 8,5 m<sup>2</sup>
- 2 Kitchen & Living Room ≈ 26 m<sup>2</sup>
- 3 Doorway ≈ 5 m<sup>2</sup>
- 4 Bedroom ≈ 9 m<sup>2</sup>
- 5 Bedroom ≈ 13,5 m<sup>2</sup>
- 6 Bathroom ≈ 9 m<sup>2</sup>
- 7 Bathroom ≈ 13,5 m<sup>2</sup>

Net Total 67,5 m<sup>2</sup>

**Gross Total 75 m<sup>2</sup>**





## NOVIS PARK™ N°13

Flat 1+1 50 m<sup>2</sup>

- 1 Balcony ≈ 8,5 m<sup>2</sup>
- 2 Kitchen & Living Room ≈ 23.5 m<sup>2</sup>
- 3 Bedroom ≈ 9 m<sup>2</sup>
- 4 Bathroom ≈ 3,5 m<sup>2</sup>

Net Total 46 m<sup>2</sup>

**Gross Total 50 m<sup>2</sup>**



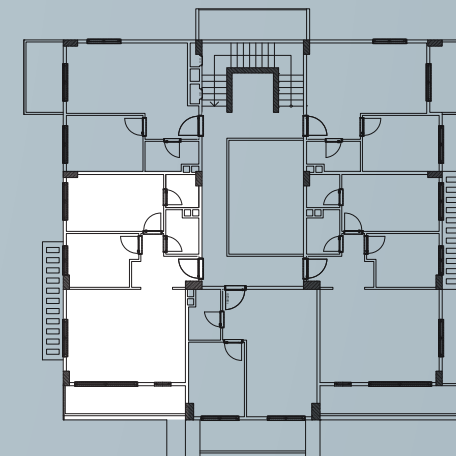
## NOVIS PARK™ N°14

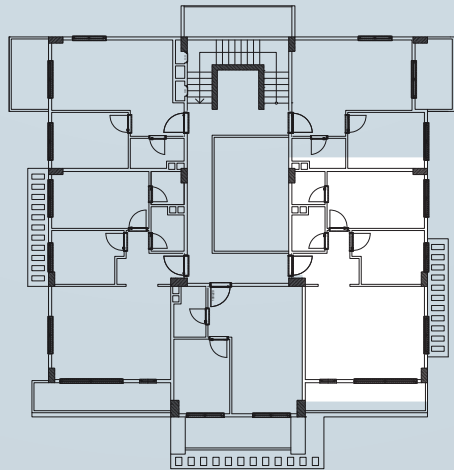
Flat 2+1 75 m<sup>2</sup>

- |   |                       |                       |
|---|-----------------------|-----------------------|
| 1 | Balcony               | ≈ 8,5 m <sup>2</sup>  |
| 2 | Doorway               | ≈ 5 m <sup>2</sup>    |
| 3 | Kitchen & Living Room | ≈ 26 m <sup>2</sup>   |
| 4 | Bedroom               | ≈ 9 m <sup>2</sup>    |
| 5 | Bedroom               | ≈ 13,5 m <sup>2</sup> |
| 6 | Bathroom              | ≈ 3 m <sup>2</sup>    |
| 7 | Bathroom              | ≈ 2,5 m <sup>2</sup>  |

Net Total 67,5 m<sup>2</sup>

**Gross Total 75 m<sup>2</sup>**





## NOVIS PARK™ N°17

Flat 2+1 75 m<sup>2</sup>

- |   |                       |                       |
|---|-----------------------|-----------------------|
| 1 | Balcony               | ≈ 8,5 m <sup>2</sup>  |
| 2 | Doorway               | ≈ 5 m <sup>2</sup>    |
| 3 | Kitchen & Living Room | ≈ 26 m <sup>2</sup>   |
| 4 | Bedroom               | ≈ 9 m <sup>2</sup>    |
| 5 | Bedroom               | ≈ 13,5 m <sup>2</sup> |
| 6 | Bathroom              | ≈ 3 m <sup>2</sup>    |
| 7 | Bathroom              | ≈ 2,5 m <sup>2</sup>  |

Net Total 67,5 m<sup>2</sup>

**Gross Total 75 m<sup>2</sup>**



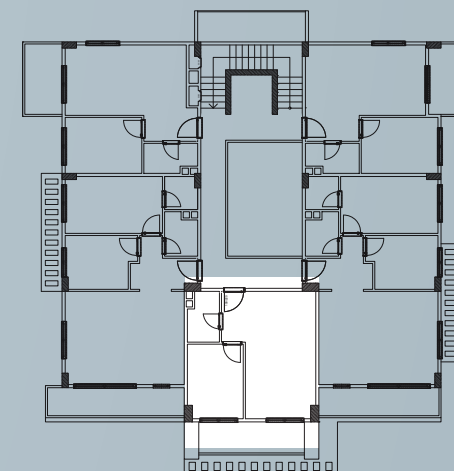
## NOVIS PARK™ N°18

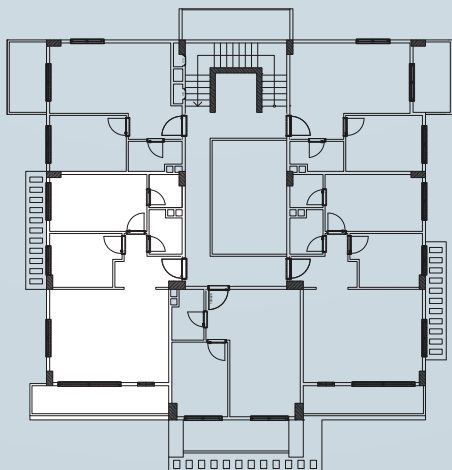
Flat 1+1 50 m<sup>2</sup>

- 1 Balcony ≈ 8,5 m<sup>2</sup>
- 2 Kitchen & Living Room ≈ 23,5 m<sup>2</sup>
- 3 Bedroom ≈ 10,5 m<sup>2</sup>
- 4 Bathroom ≈ 3,5 m<sup>2</sup>

Net Total 46 m<sup>2</sup>

**Gross Total 50 m<sup>2</sup>**





## NOVIS PARK™ N°19

Flat 2+1 75 m<sup>2</sup>

- 1 Balcony ≈ 9,5 m<sup>2</sup>
- 2 Doorway ≈ 5 m<sup>2</sup>
- 3 Kitchen & Living Room ≈ 26 m<sup>2</sup>
- 4 Bedroom ≈ 9 m<sup>2</sup>
- 5 Bedroom ≈ 13,5 m<sup>2</sup>
- 6 Bathroom ≈ 3 m<sup>2</sup>
- 7 Bathroom ≈ 2,5 m<sup>2</sup>

Net Total 68,5 m<sup>2</sup>

**Gross Total 75 m<sup>2</sup>**





# NOVIS PARK™ N°22

Penthouse Duplex 2+1 173 m<sup>2</sup>

## Ground Floor

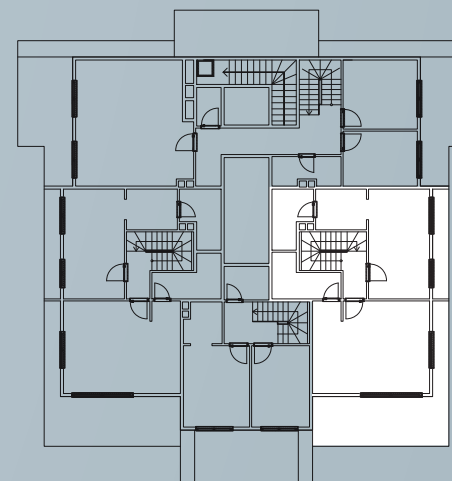
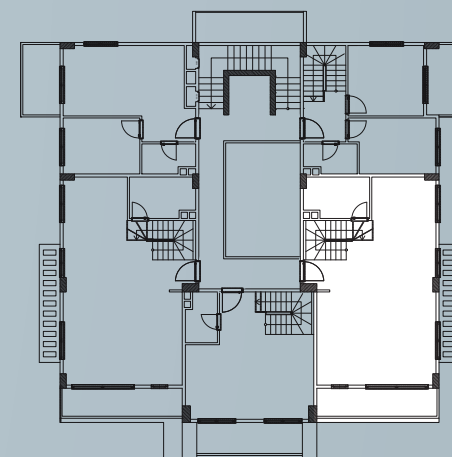
- 1 Balcony ≈ 8,5 m<sup>2</sup>
- 2 Kitchen ≈ 12 m<sup>2</sup>
- 3 Salon ≈ 32 m<sup>2</sup>
- 4 Bathroom ≈ 6,5 m<sup>2</sup>
- 5 Corridor & Stairs ≈ 12 m<sup>2</sup>

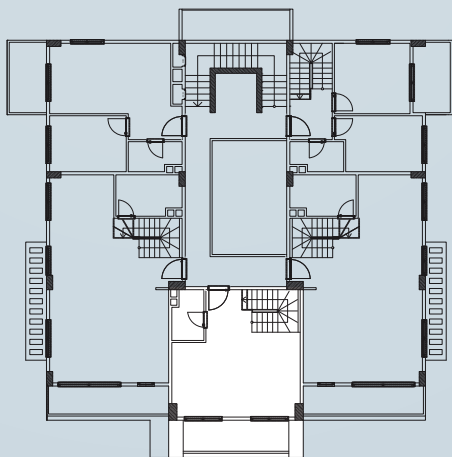
## Upper Floor

- 6 Teras ≈ 25 m<sup>2</sup>
- 7 Bedroom ≈ 26 m<sup>2</sup>
- 8 Dressing Room ≈ 5 m<sup>2</sup>
- 9 Bedroom ≈ 16,5 m<sup>2</sup>
- 10 Bathroom ≈ 5,5 m<sup>2</sup>
- 11 Bathroom ≈ 5 m<sup>2</sup>
- 12 Corridor & Stairs ≈ 8,5 m<sup>2</sup>

Net Total 162,5 m<sup>2</sup>

**Gross Total 173 m<sup>2</sup>**



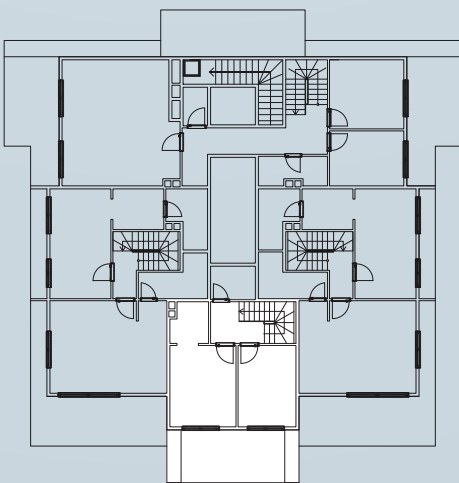


## NOVIS PARK™ N°23

Penthouse Duplex 2+1 108 m<sup>2</sup>

### Ground Floor

- 1 Balcony ≈ 8,5 m<sup>2</sup>
- 2 Kitchen & Living Room ≈ 24 m<sup>2</sup>
- 3 Bathroom ≈ 4 m<sup>2</sup>
- 4 Corridor & Stairs ≈ 9 m<sup>2</sup>



### Upper Floor

- 5 Teras ≈ 13,5 m<sup>2</sup>
- 6 Bedroom ≈ 11,5 m<sup>2</sup>
- 7 Bedroom ≈ 13,5 m<sup>2</sup>
- 8 Dressing Room ≈ 4 m<sup>2</sup>
- 9 Bathroom ≈ 4 m<sup>2</sup>
- 10 Corridor & Stairs ≈ 8,5 m<sup>2</sup>

Net Total 100,5 m<sup>2</sup>

**Gross Total 108 m<sup>2</sup>**



# NOVIS PARK™ N°24

Penthouse Duplex 2+1 173 m<sup>2</sup>

## Ground Floor

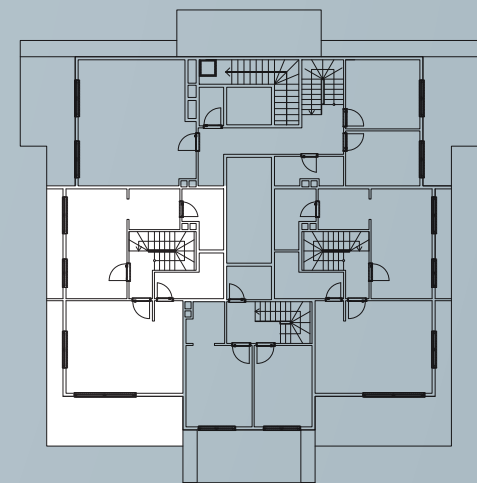
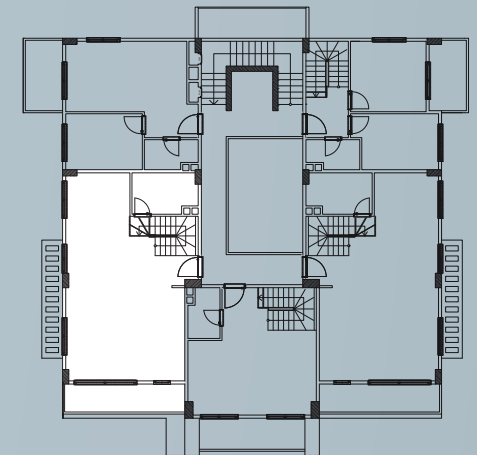
- 1 Balcony ≈ 8,5 m<sup>2</sup>
- 2 Kitchen ≈ 12 m<sup>2</sup>
- 3 Salon ≈ 32 m<sup>2</sup>
- 4 Bathroom ≈ 6,5 m<sup>2</sup>
- 5 Corridor & Stairs ≈ 12 m<sup>2</sup>

## Upper Floor

- 6 Teras ≈ 25 m<sup>2</sup>
- 7 Bedroom ≈ 26 m<sup>2</sup>
- 8 Dressing Room ≈ 5 m<sup>2</sup>
- 9 Bedroom ≈ 16,5 m<sup>2</sup>
- 10 Bathroom ≈ 5,5 m<sup>2</sup>
- 11 Bathroom ≈ 5 m<sup>2</sup>
- 12 Corridor & Stairs ≈ 8,5 m<sup>2</sup>

Net Total 162,5 m<sup>2</sup>

**Gross Total 173 m<sup>2</sup>**





*Novis Beach general view*



*Novis Park general view*



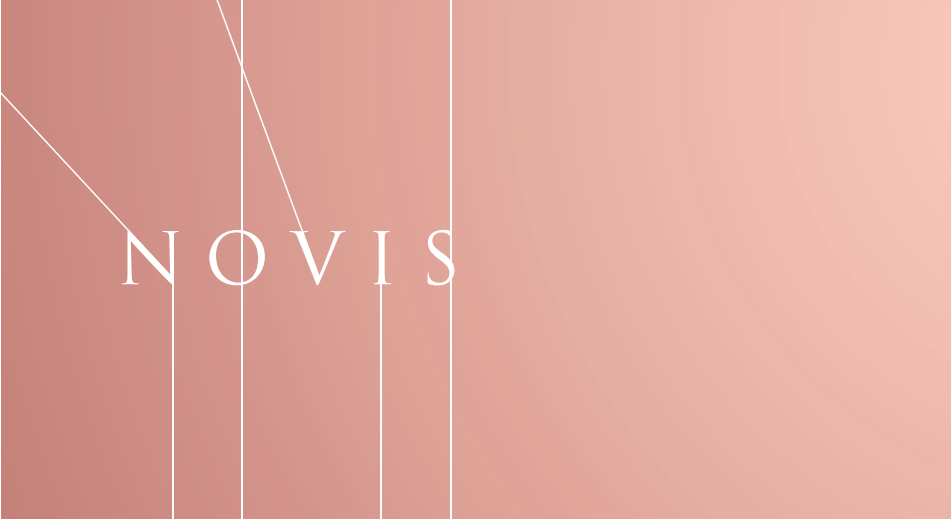
NOVIS

## NOVIS CONSTRUCTION

*A joint venture between the connoisseurs of the region that have always created breakthrough projects in Alanya with the most astonishing designs of the region.*

*Now they are proudly and enthusiastically ready to convey years of sectoral and regional experience into **NOVIS BEACH™** and **NOVIS PARK™** projects that are due for Spring 2021 with the mission to bring together world class vision and Mediterranean's ecstatic lifestyle...*

*...Novis, upscale your lifestyle.*



NOVIS